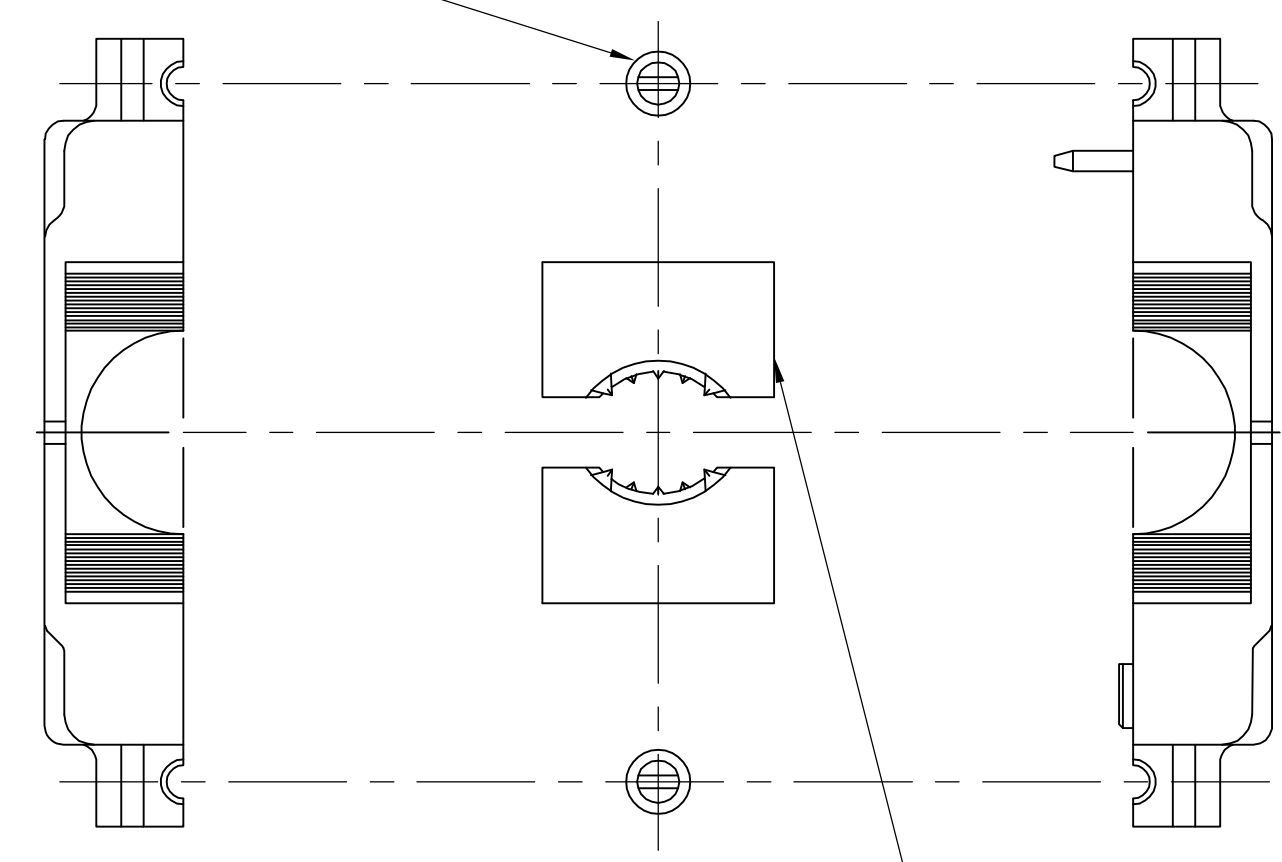
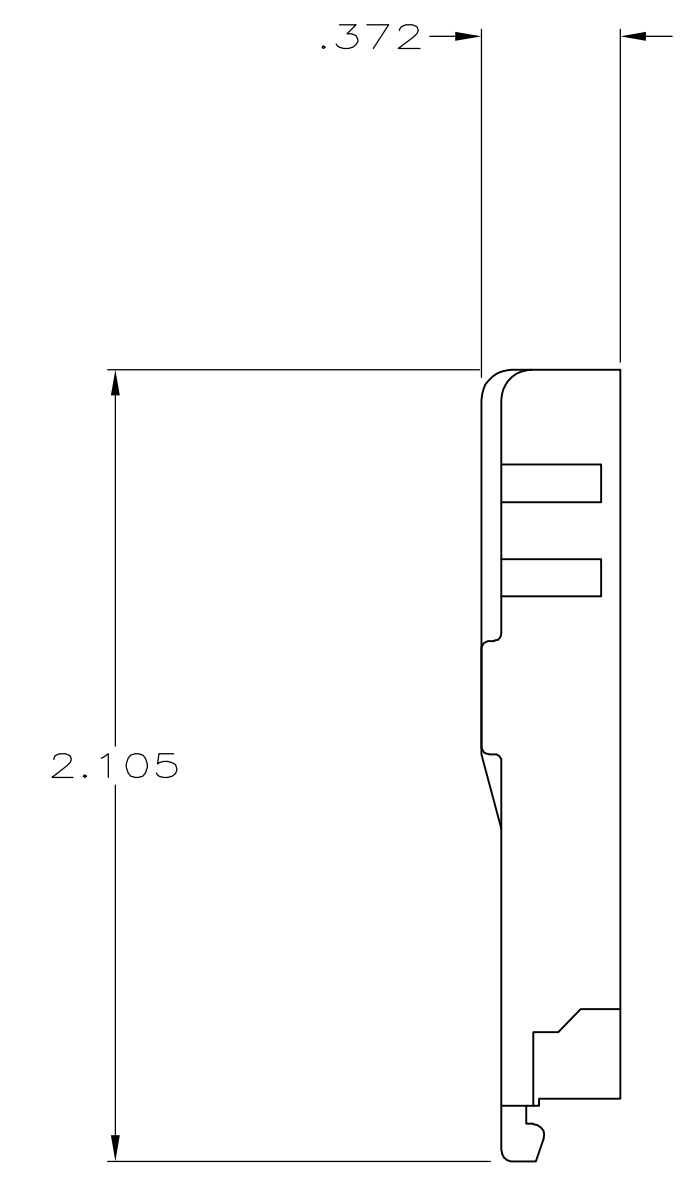


MOUNTING SCREW, STEEL  
 TYPICAL (2)



CABLE CLAMP WEDGE SET, QUANTITY:2  
 ONE SET FOR .190 DIA TO .380 DIA  
 CABLE AND ONE SET FOR .380 DIA  
 TO .530 DIA CABLE



CABLE CLAMP  
 HALF, QUANTITY:2

25 POSITION AMPLIMITE  
 CONNECTOR, SHOWN REFERENCE ONLY

- ALL PARTS ARE PACKAGED UNASSEMBLED.
  - PARTS PACKAGED AS A UNIT KIT.
  - PARTS INDIVIDUALLY BULK PACKED AND SHIPPED AS A UNIT PACKAGE.
- 4 MOLDED PARTS: ABS MOLDING COMPOUND, COLOR BLACK.  
 SCREWS: STEEL.
- 5 SCREWS: ZINC PLATED CLEAR CHROMATE COATED.

5747824-1  
 PART  
 NUMBER

THIS DRAWING IS A CONTROLLED DOCUMENT.		DWN R. RICHARDSON 15SEP05		Tyco Electronics Corporation Harrisburg, PA 17105-3608
DIMENSIONS: INCHES		CHK C. ROHDE 15SEP05		APVD M. WALMSLEY 15SEP05
TOLERANCES UNLESS OTHERWISE SPECIFIED:		APPLICATION SPEC		
0 PLC ± - 1 PLC ± - 2 PLC ± - 3 PLC ± .005 4 PLC ± - ANGLES ± -		RESTRICTED TO		
MATERIAL 4	FINISH 5	WEIGHT -	SIZE A1 00779	DRAWING NO 5747824
CUSTOMER DRAWING		SCALE 2:1	SHEET 1 of 1	REV 0